

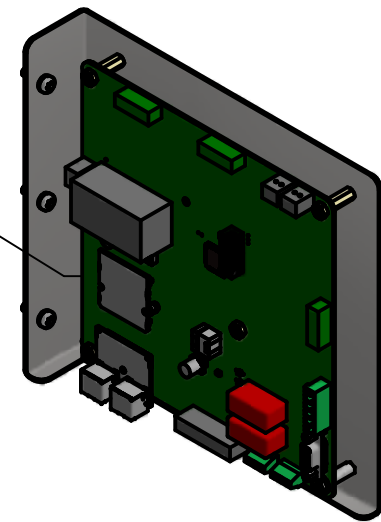
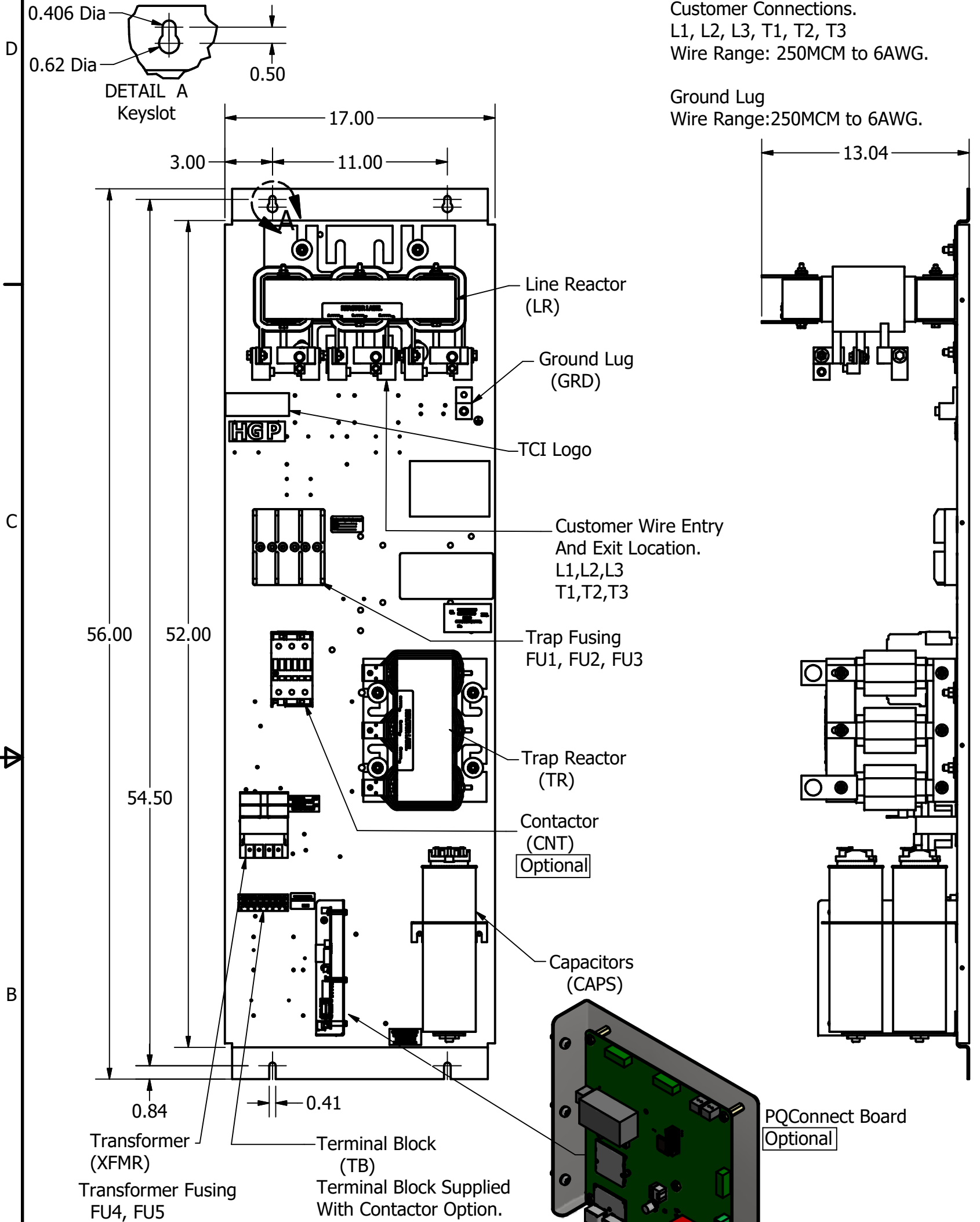
HGP Open Part Number	Schematic Drawing #	Approx Weight (LBS)
HGP0125AW0S0000	28697-S	220
HGP0125AW0C0000	28697	225
HGP0125AW0S1000	29597-PQ1	222
HGP0125AW0C1000	29597-PQ	227

HGP Part Number	HorsePower (HP)	kVar	Harmonic	Voltage (V)	Hz.	Phase
HGP0125AW----	125	40	5th	480	60	3

HGP Eclosed Type 1 Part Number	Schematic Drawing #	Approx Weight (LBS)
HGP0125AW1S0000	28697-S	315
HGP0125AW1C0000	28697	320
HGP0125AW1S1000	28697-PQ1	316
HGP0125AW1C1000	29597-PQ	321

Note: For Torque Information See IOM Manual.  
Customer Connections. L1, L2, L3, T1, T2, T3  
Wire Range: 250MCM to 6AWG.

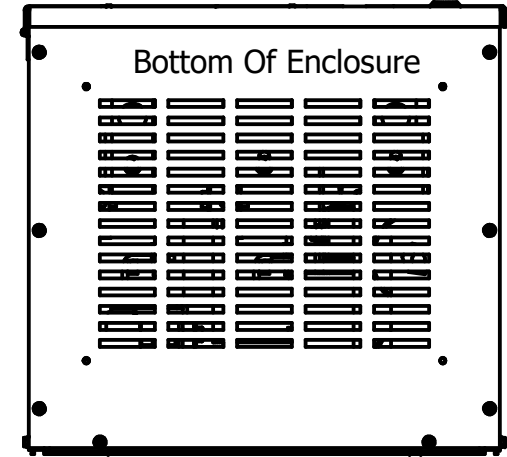
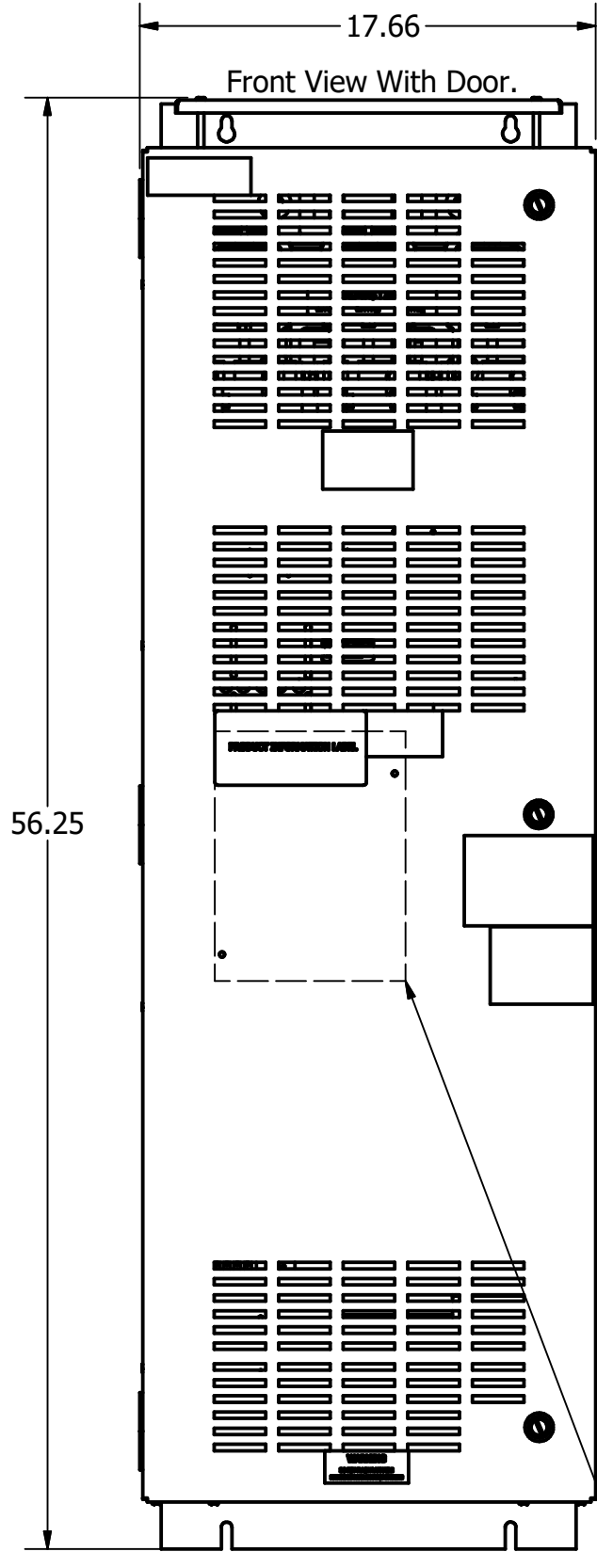
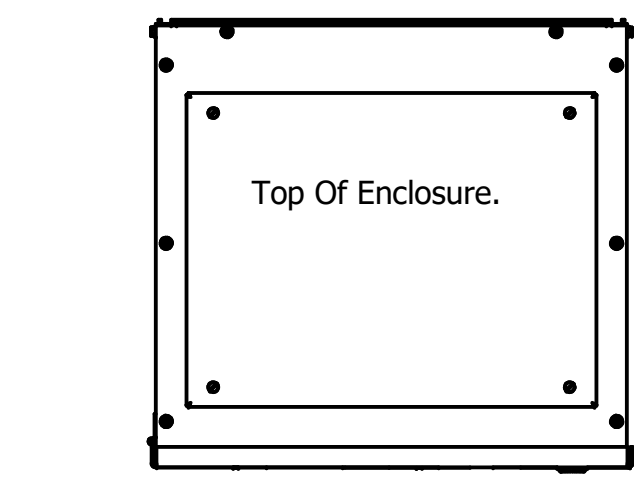
Ground Lug Wire Range: 250MCM to 6AWG.



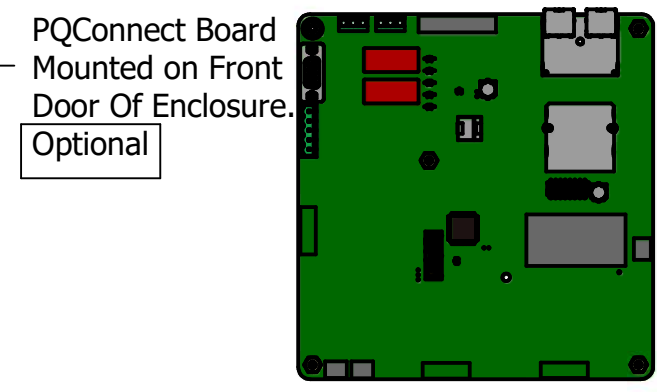
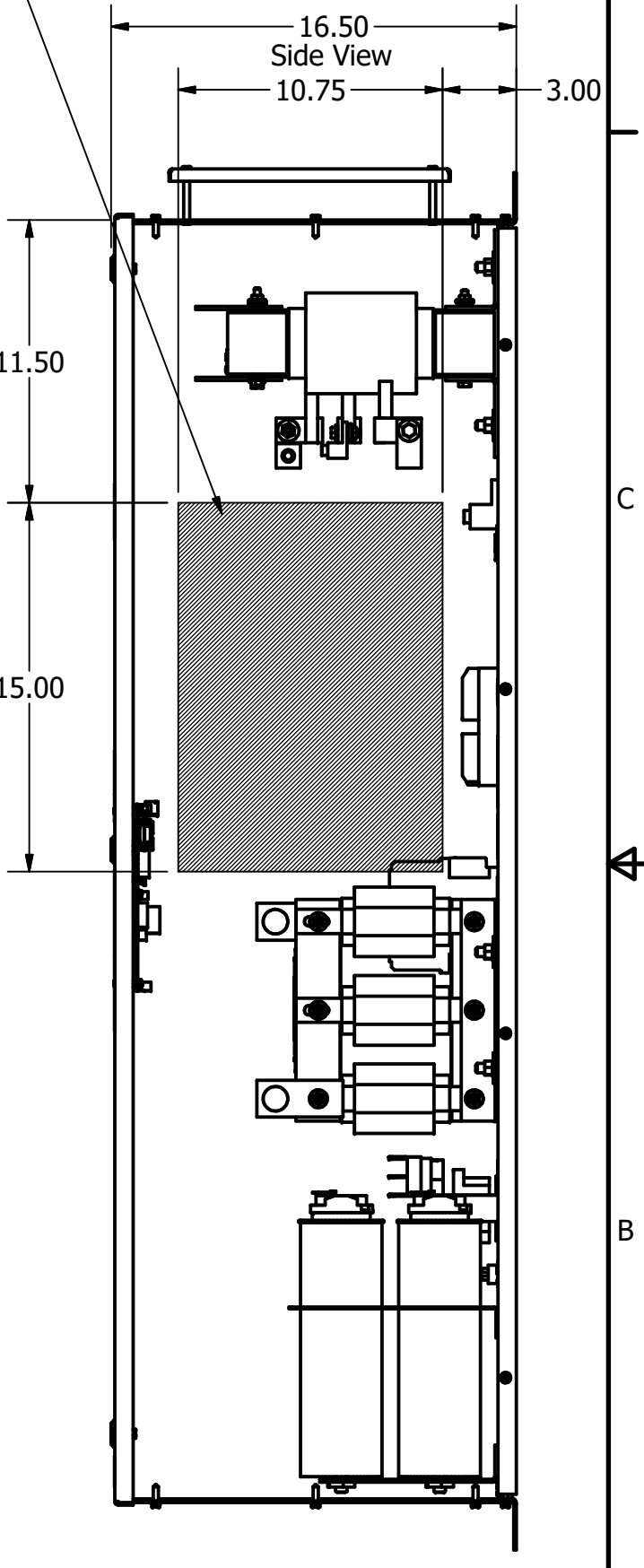
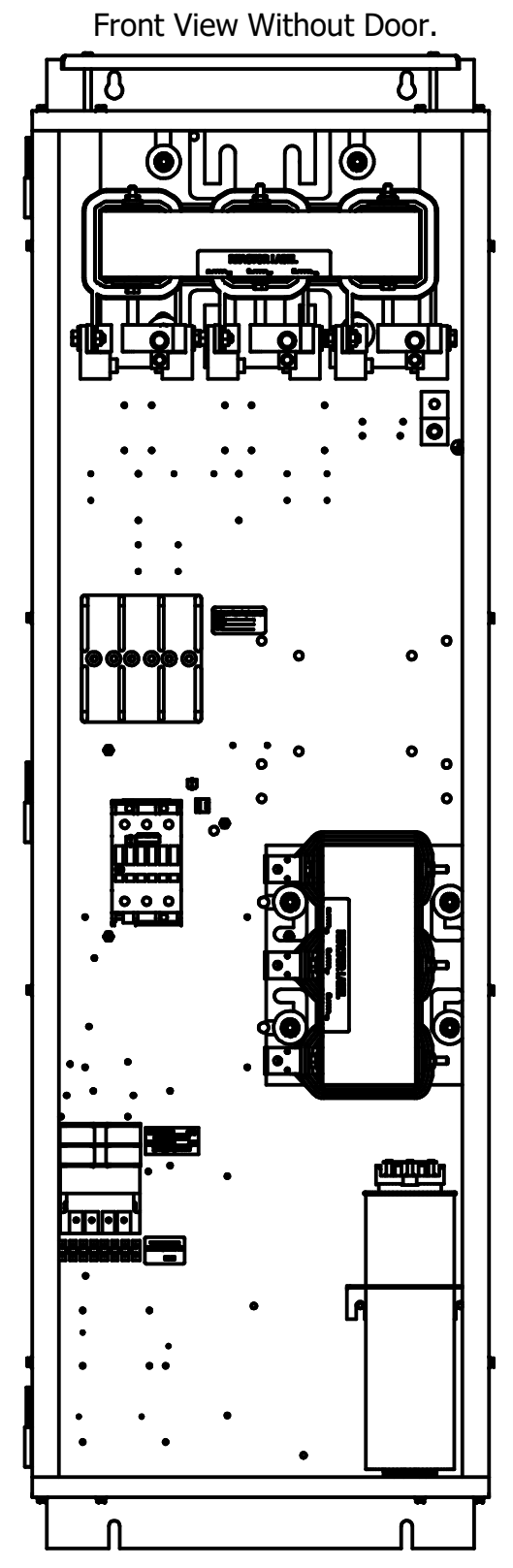
PQConnect Board Optional

Note: Customer is responsible for proper cooling of filter components on open panels. Capacitors Maximum Ambient 50°C

Components	HGP0125AW----			
	0S0000/1S0000	0C0000/1C0000	0S1000/1S1000	0C1000/1C1000
Line Reactor (LR)	X	X	X	X
Trap Reactor (TR)	X	X	X	X
Capacitor (Cap)	X	X	X	X
Trap Fusing, FU1, FU2, FU3	X	X	X	X
Contactor (CNT)		X		X
Transformer (XFMR)		X	X	X
XFMR Fusing, FU4, FU5		X	X	X
PQConnect Board			X	X



Suggested Area, For Customer Wire Entry And Exit Location.



PQConnect Board Mounted on Front Door Of Enclosure. Optional

Customer Is Responsible For Installation to Meet All National And Local Electrical Codes.

Material(s) Shall be RoHS Compliant

TCI, LLC CLAIMS PROPRIETARY RIGHTS IN THE MATERIAL HEREIN DISCLOSED. IT IS SUPPLIED WITHOUT PREJUDICE TO ANY PATENT RIGHTS OF TCI AND MAY NOT BE REPRODUCED OR USED TO MANUFACTURE ANYTHING SHOWN THEREIN WITHOUT WRITTEN PERMISSION FROM TCI.

TOLERANCES (EXCEPT AS NOTED)		
DECIMAL	FRACTIONAL	ANGULAR
.XX ± .25	± 1/16	± 1°

**TCI** W132 N10611 Grant Drive  
Germantown, WI 53022

HarmonicGuard Passive  
HGP, 125HP, 480/3/60, Open and Type 1

DRN BY: DSW DATE: 10/31/13 105488DG  
SCALE: 1/6 APRVD: SIZE: C SHT 1 OF 1